

---

# EVOPLATFORMSET ICFLOWSET & EVOMINISSET



*The EVOPlatform application software and communication driver must be installed before the configuration kit is connected to the PC*

## Installation Guide

*Before carrying out any operation, read this guide carefully*

---

# Index

- 1 Introduction ..... 3
- 2 Installation of the EVOPlatform software..... 3
  - 2.1 Launch of EVOPlatform..... 6
- 3 EVOPLATFORMSET ..... 8
  - 3.1 Connection with EvominiX series devices..... 8
  - 3.2 Connection with EvominiX series devices in SCAT version..... 9
  - 3.3 Connection with EvominiSER series devices ..... 10
- 4 ICFLOWSET..... 11
  - 4.1 Connecting the kit to the ICFlow device..... 11
- 5 EVOMINISSET ..... 13
  - 5.1 Connection with EvominiX series devices..... 13
- 6 Technical characteristics ..... 14

# 1 Introduction

EVOPLATFORMSET and ICFLOWSET are configuration interfaces to be used only with the EVOPlatform software application.

EVOPLATFORMSET kit allows to configure the Italcoppie devices of the EvominiSER, EvominiX and EvoWL (receiver) series while the ICFLOWSET the devices of the ICFlow series.

In order to use these interfaces it is necessary first of all to install the EVOPlatform software and the relative communication driver as below described.



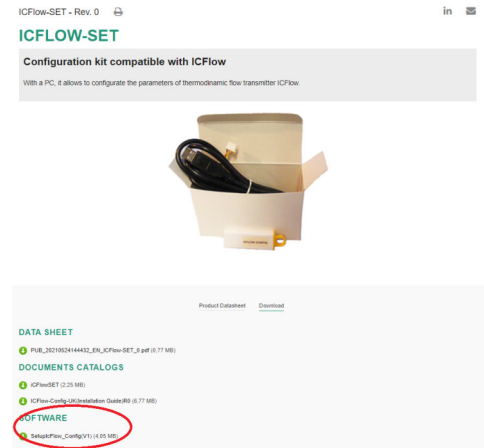
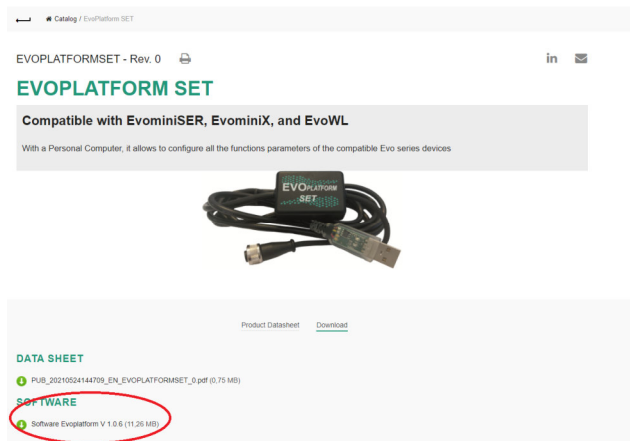
*Before carrying out any operation, carefully read the introductory guides of EVOPLATFORMSET (code IMB193) or ICFLOWSET (code IMB143) contained in the packaging of the respective kits.*

# 2 Installation of the EVOPlatform software

EVOPlatform is compatible with Windows 10® operating system

It is possible to download the updated version of the EVOPlatform software from the Italcoppie website in the "Download" section of the EVOPLATFORMSET and ICFLOWSET data sheets available online at the following links:

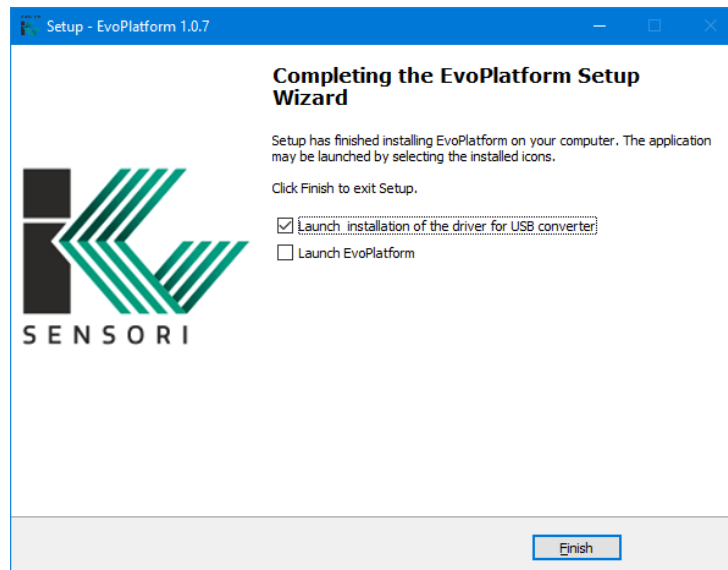
- <https://products.italcoppie.it/products/evoplatformset-it/>



**ATTENTION: before connecting the kit to the USB port of the PC carry out the following operations:**

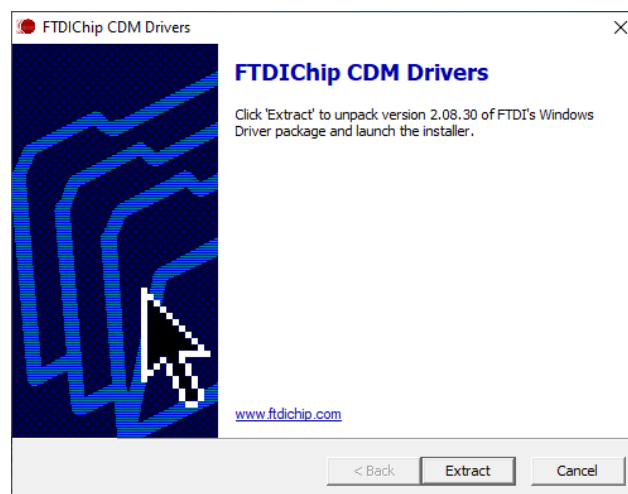
Download EVOPlatform (it is in zip format); extract the contents into a folder then run the "setupEvoPlatform.exe" file in Administrator mode.

Follow the steps proposed by the installation; at the end it will be possible to choose if install the driver for the USB converter too as indicated below:

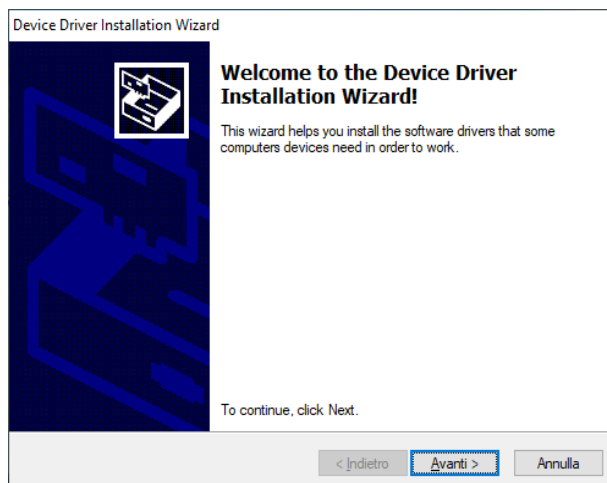


If it is the first EvoPlatform installation (therefore it is not present in Windows® programs), leave the check on “Launch installation of the driver for USB converter” and press “Finish”. If not, remove the check and press "Finish"

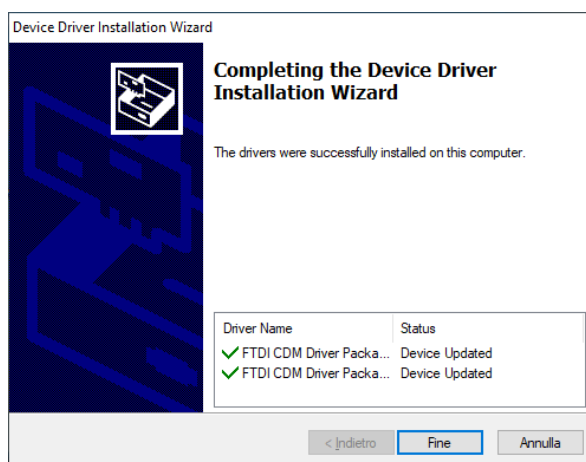
If the USB converte driver installation has been selected, the following window will appear:



Click on “Extract” to continue and wait for the extraction process to finish.



Click "Next" to continue and wait the end of installation:



Click "End" to complete the installation.

Connect the kit to a free USB port on the PC and wait for the operating system to recognize it by automatically installing the communication driver.

## 2.1 Launch of EVOPlatform

Double click on the EVOPLATFORM icon on desktop:

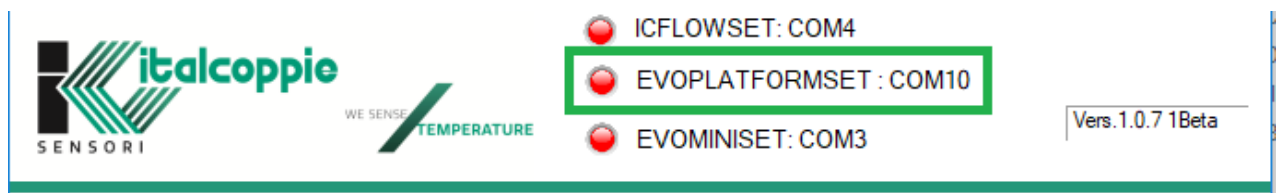


The following window will appear:

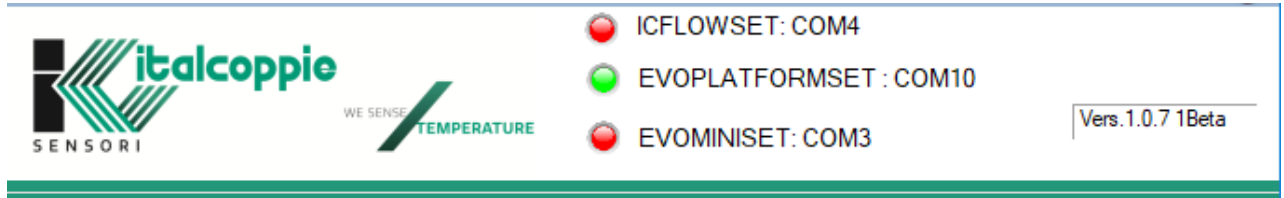


In the upper area of the window there are three LEDs that indicate which kits are connected to the PC: when the LED is green the kit is connected correctly, if the LED is red the kit is not connected. It is possible connect both kits (ICFLOWSET and EVOPLATFORMSET) on the same time.

If you run EVOPlatform and connect a programming kit to the USB port of the PC at a later time, the respective LED will remain red:



For example, if you have connected the EVOPLATFORMSET kit, click with the mouse on “EVOPLATFORM SET” (green rectangle in the figure) to enable it: the corresponding LED will turn green.



Note: the EVOPlatform software automatically recognizes the COM port to which the kit is connected. The COM number is indicated next to the name of the kit (in the example above, EVOPLATFORMSET is installed on COM10).

In the event that Windows® is unable to recognize the COM port of the kit due to conflicts between drivers, the corresponding LED remains red and the selection of the COM port is enabled on the icon of the device to be programmed:

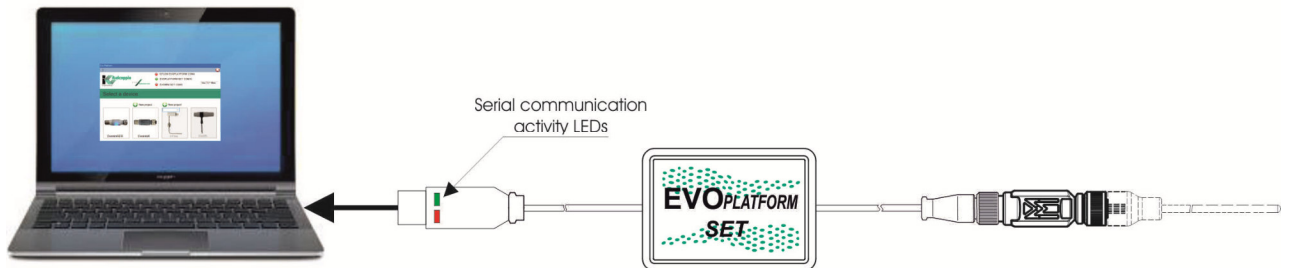


From the Windows® Control Panel, System \ Device Manager \ COM Ports menu, check which COM port the kit is installed on and select it from the respective drop-down menu.

### 3 EVOPLATFORMSET

When the kit is connected to the PC, on the initial screen of EVOPlatform the corresponding LED is green and it is only possible to access the programming of the enabled devices (the image of the enabled device has a white background) that is EvominiX, EvominiSER and EvoWL (transmitter only).

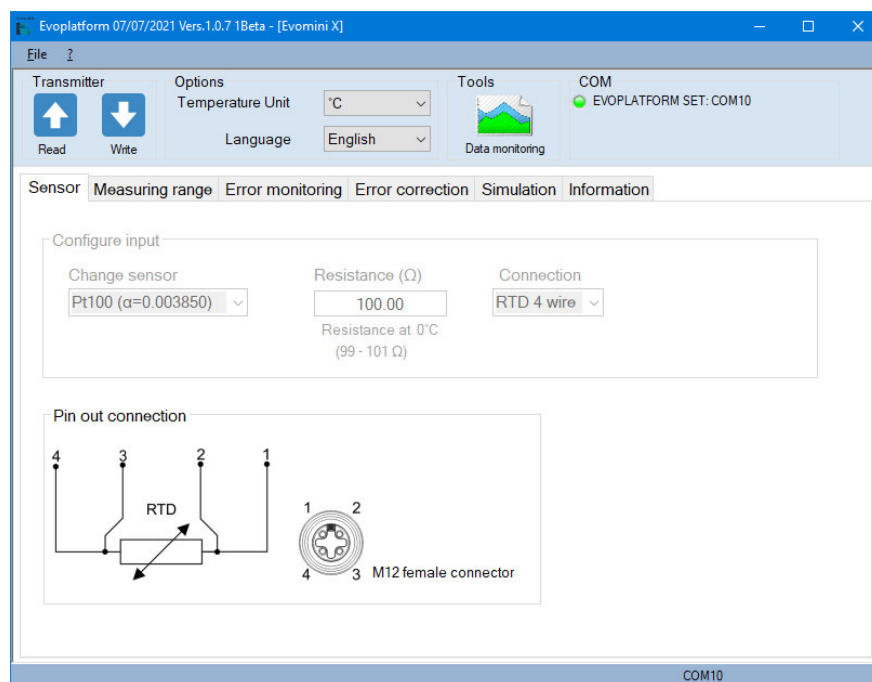
#### 3.1 Connection with EvominiX series devices



- Screw the M12 connector of the kit to the EvominiX transmitter. (For EvominiX and EvomniXCM models also connect the temperature sensor: programming the device is still possible even if the sensor is not connected to the transmitter). The EvominiX transmitter is powered by the EVOPLATFORMSET kit
- Click on icon



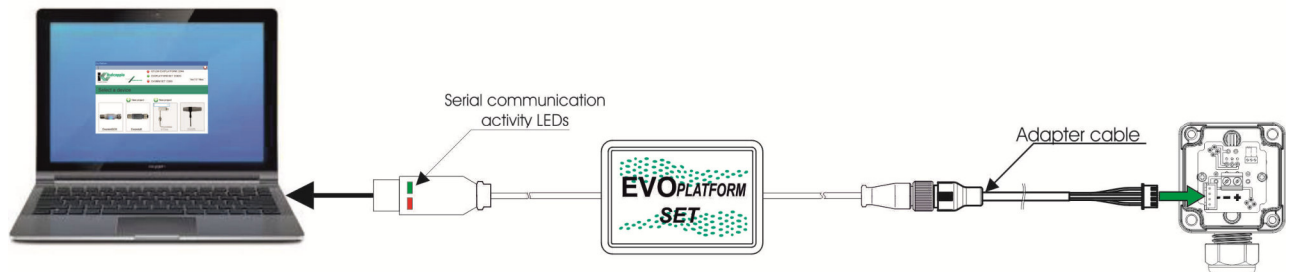
and wait for the device to be read. The following window will appear:






For device configuration, refer to the EVOPlatform application help (F1 key) and the manual included in the device package (code IMB180) or downloadable from the website <https://products.italcoppie.it/products/catalog-it/>

### 3.2 Connection with EvominiX series devices in SCAT version



- Screw the M12 connector of the kit to the adapter cable contained in the kit package
-  Make sure that EvominiX SCAT is **NOT** powered through the 2-pole screw connector
- Insert the 4-pole JST model female connector into the corresponding EvominiX SCAT male connector. The EvominiX SCAT transmitter is powered by the EVOPLATFORMSET kit.
- Click on the icon



and wait for the device to be read

For device configuration, refer to the EVOPlatform application help (F1 key) and the manual included in the device package (code IMB104) or downloadable from the website <https://products.italcoppie.it/products/catalog-it/>

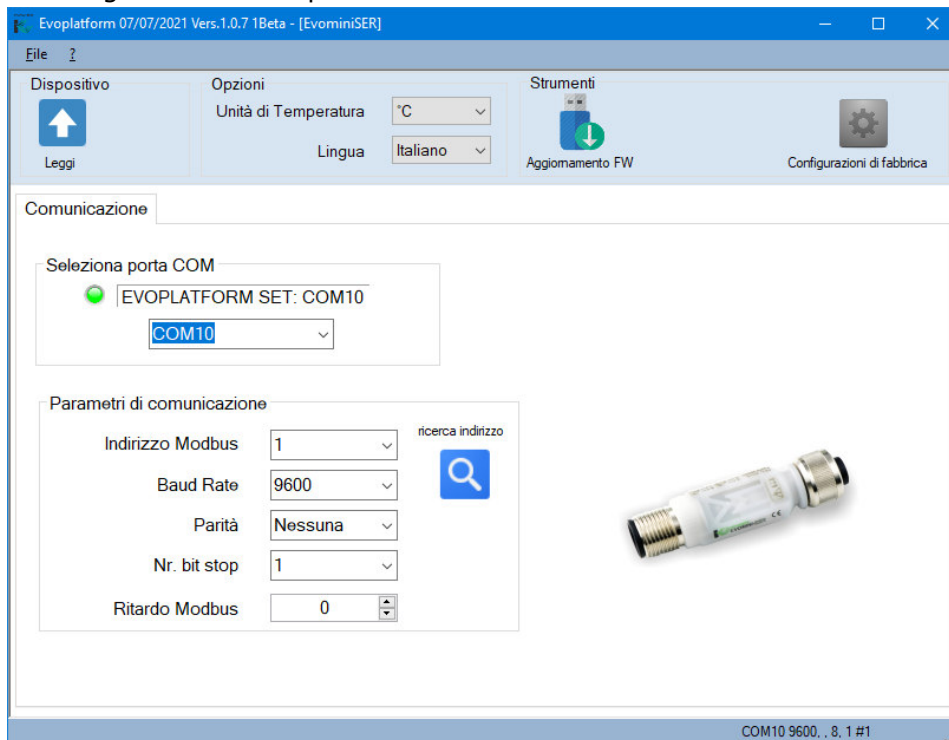
### 3.3 Connection with EvominiSER series devices



- Screw the M12 connector of the kit to the EvominiSER transmitter (programming of the device is still possible even if the sensor is not connected to the transmitter). The EvominiSER transmitter is powered by the EVOPLATFORMSET kit: the flashing of the blue LED on EvominiSER device indicates the presence of power.
- Click on the icon



The following window will open:



- Set the communication parameters and click on the "Read" icon to read the device configuration.

For device configuration, refer to the EVOPlatform application help (F1 key), the introductory guide code IMB209 / IMB190 included in the package or the operating manual of the device code IMB222 downloadable from the website <https://products.italcoppie.it/products/catalog-it/>

## 4 ICFLOWSET

When the kit is connected to the PC, on the initial screen of EVOPlatform the relative LED is green and it is only possible to access the programming of the ICFlow device.



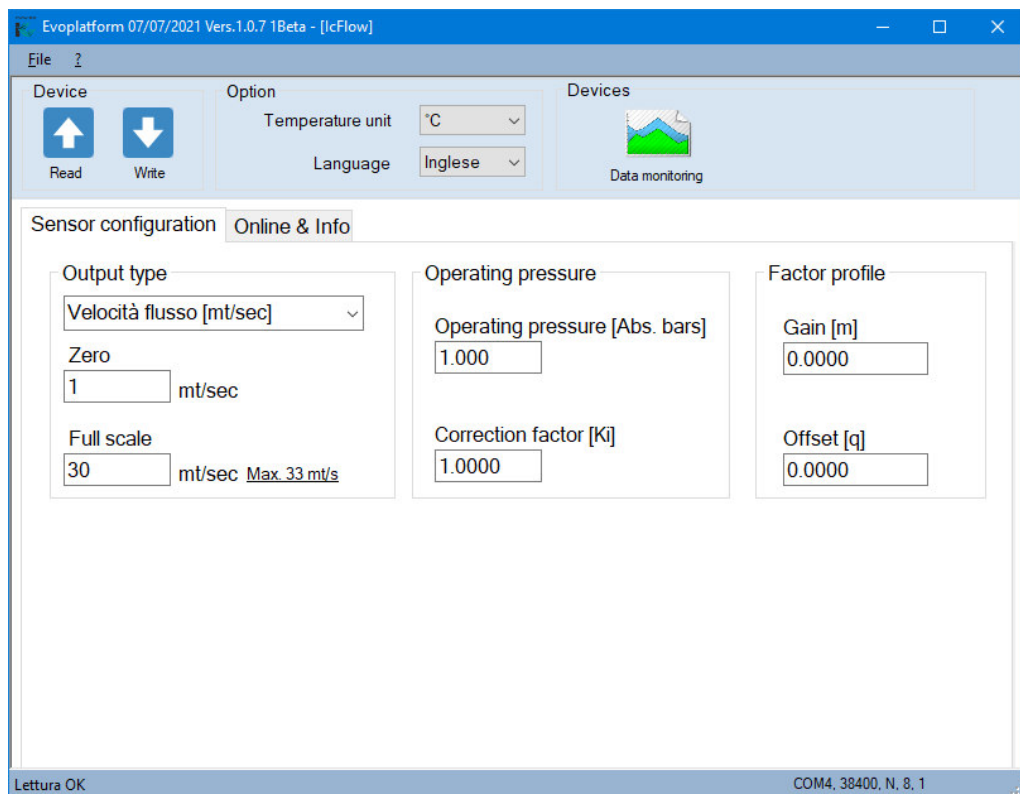
### 4.1 Connecting the kit to the ICFlow device

To connect the kit to the device, refer to the guide code IMB143 included in the ICFLOW package

- Click on the icon



and wait for the device to be read. The following window will appear:

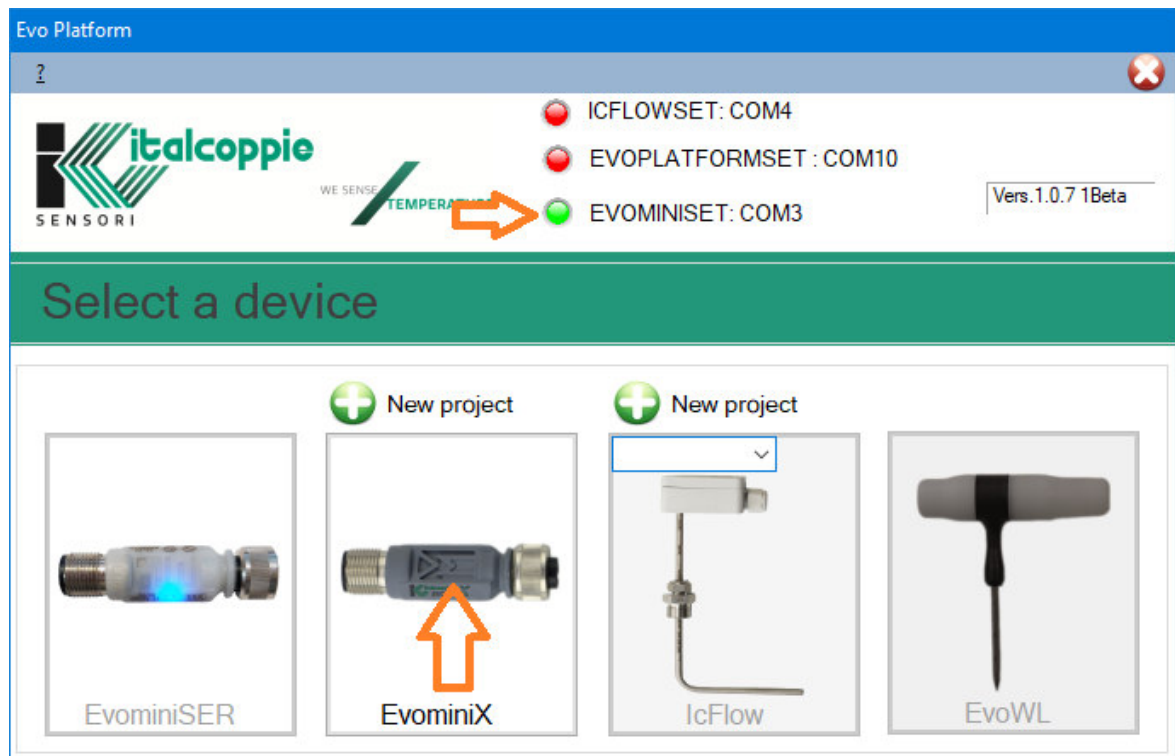


For the device configuration, refer to the EVOPlatform application help (F1 key) to the guide included in the device packaging (code IMB143) and to the IMB152 manual downloadable from the website <https://products.italcoppie.it/products/catalog-it/>

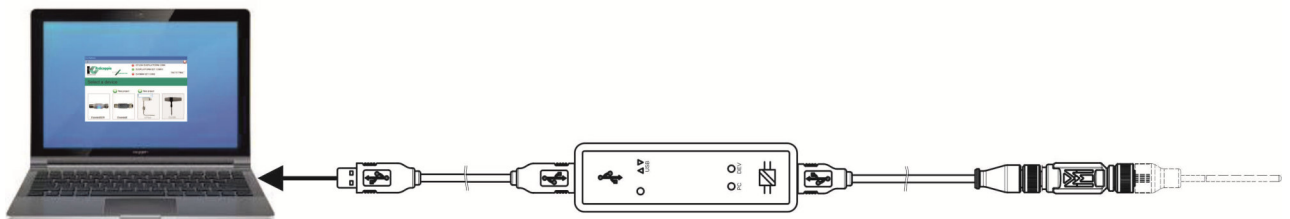
## 5 EVOMINISSET

EVOMINISSET is the kit that allows you to program only the EVOMINIX series devices; this kit has been replaced by the EVOPLATFORMSET kit. Although obsolete, it is still compatible with the EVOPlatform application.

Connect EVOMINISSET to a free USB port on the PC, then launch EVOPlatform: in the upper part of the window the EVOMINISSET LED will be green



### 5.1 Connection with EvominiX series devices

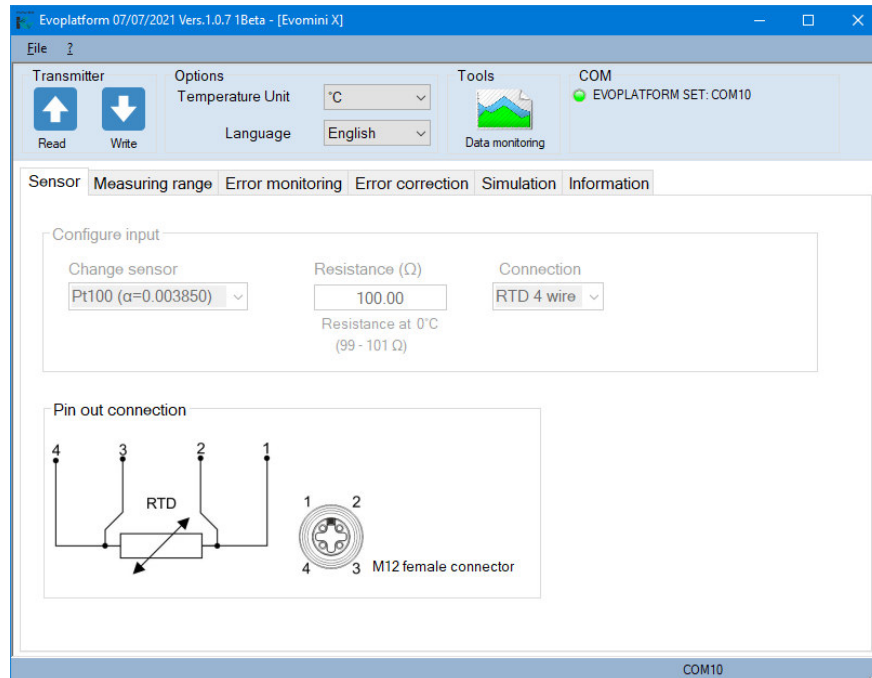


- Screw the M12 connector of the kit to the EvominiX transmitter. (For EvominiX and EvomniXCM models also connect the temperature sensor: programming the device is still possible even if the sensor is not connected to the transmitter). The EvominiX transmitter is powered by the EVOMINISSET kit

- Click on icon



and wait for the device to be read. The following window will appear:



For device configuration, refer to the EVOPlatform application help (F1 key) and the manual included in the device package (code IMB089) or downloadable from the website <https://products.italcoppie.it/products/catalog-it/>

## 6 Technical characteristics

Refer to the technical data sheets on the website: <https://products.italcoppie.it/products/catalog-it/>

*All rights reserved.*

*No part of this document may be reproduced or transmitted in any form, electronically or mechanically, or any purpose, without prior authorisation in writing by ITALCOPPIE SENSORI srl*

*ITALCOPPIE SENSORI srl takes the greatest pains to ensure that the information given in this document are correct. However, ITALCOPPIE SENSORI srl products are continually being improved; this may result in modifications without notification to the contents of this manual. ITALCOPPIE SENSORI srl is not liable for technical and editorial errors or omissions in the material contained herein, nor for incidental or consequential damages resulting from the supply, performance or use of this material.*

ITALCOPPIE SENSORI srl

Via A. Tonani, 10

26030 Malagnino (Cremona) Italy

Tel. +39 0372-441220

<http://www.italcoppie.com>