

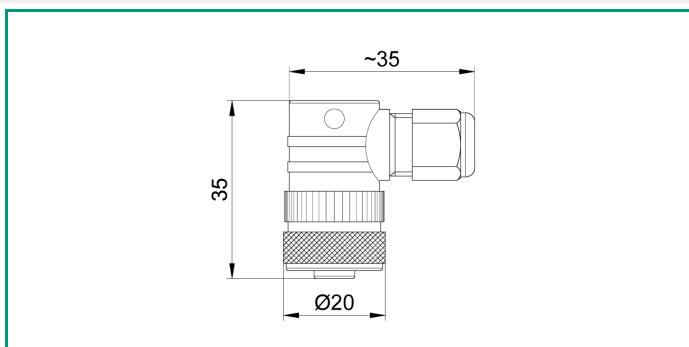
CONV033

Rev. 0 - 19/12/2024

M12x1 ELBOW TYPE FEMALE CONNECTOR WITH TERMINAL BLOCK 4 ELECTRICAL CONTACTS

Female connector 4 pins socket with screwed connection M12x1 and output at 90°

Connector able to connect in a very easy way (through screwed terminal block) cables with whatever lengths and insulations in a high protection degree (IP67)



TECHNICAL SPECIFICATION

Type of connector	female 4-pin connector with right-angle output (screw terminals) with M12x1 metal screw lock (in accordance with DIN-VDE0627 STANDARDS)
Connection body material	THERMOPLASTIC
Connector operating temperature	-25 ÷85°C
Cable gland dimension	Ø 4 ÷6 mm
Maximum conductor gauge	18 AWG
International protection marking (*) (*) According to IEC 60529	IP67

ORDER CODES

CONV033